



Győr-Sopron-Ebenfurti Vasút Zrt. (GYSEV Zrt.)

Location: H-9400, Sopron, Mátyás király u. 19.

Industry: Rolling stock



ANGERMANN™
Seit 1953.

Content

- I. Details
- II. Fact sheet
- III. Wagon list
- IV. Locations
- V. Photos



Details

- Used passenger wagons, multi-purpose wagons for baggage & bicycles incl. spare parts & equipment of the company GYSEV Zrt.

- **GYSEV Zrt**

The Raaberbahn or GySEV is an Austrian–Hungarian railway company based in Sopron, Hungary. The company is a joint enterprise of the states of Hungary (65.7%), Austria (28.2%) and Strabag SE (6,1%). In Hungarian it is called Győr-Sopron-Ebenfurti Vasút (GySEV), in German it was called Raab-Oedenburg-Ebenfurter Eisenbahn (ROeEE) until 2008 when it changed to its name to Raaberbahn.

In 2013 Raaberbahn transported a total of 7.5 million passengers in Hungary and Austria. Thereof 5.9 million passengers were en route at Hungarian track sections.

- **Wagon list**

- Halberstädter EUROREGIO wagons (21 pcs)
- Halberstädter EUROREGIO multi-purpose baggage cars (4 pcs)
- Schlieren 29-03 wagons (11 pcs)
- Schlieren 29-03 multi-purpose baggage car (1 pc)
- Schlieren 29-05 wagons (6 pcs)
- Schlieren 84-05 multi-purpose bicycle cars (8 pcs)
- MAV Dunakeszi 82-03 wagon (1pc)

- If you have questions or wish to schedule an appointment for viewing please contact Mr. Aron Magyari (magyari@netbid.com / phone +43 676 483 8091; mobile +36 30 2748 744) at any time.

Fact sheet

- **RIC clearance**

The Halberstädter-wagons have the RIC and they are allowed to run internationally. The Schlieren-wagons had the RIC before, but it expired. They only ran on domestic rails with Hungarian certification.

- **Countries with approval for the wagons**

Generally, the Hungarian inspection could be accepted in the European Union as well, but all of the waggons have an expired license. Because most of the wagons had or have the RIC, it is possible to issue even international license.

- **Temporary approvals intact**

All wagons have expired licenses, except the Halberstädter Bdb No. 51 43 84-36002-0, where the license applies until end of 2019. If needed, the new owner could ask for a one-route license.

- **Access to all service documents incl. manuals**

- **Equipment of the wagons**

- Air condition: There are air conditions in 8 Schlieren-wagons (-005-1, 006-9, 008-5, 009-3, 010-1, 012-7, 013-5, 014-3). The installed air condition systems are standard single building units.
- Infotainment system: The Schlieren-wagons -005-1, 006-9, 008-5, 009-3, 010-1, 012-7, 013-5, 014-3 have infotainment systems. Two units per wagon, a TFT monitor equipped with a special mobile PC. The system is capable to broadcast traffic data as current position, speed, map, estimated arrival, etc. and uploaded video content.
- Toilets: The Halberstädter wagons are equipped with closed, the Schlieren wagons with standard toilet system.

Wagon List (Halberstädter EUROREGIO wagons)

Type: AByz

- Quantity: 5 pcs.
- Railway track no.: 51 43 31-30...
- YOM: 1978-1982
- Overhaul: 1996
- Heating: 1500/1000 V
- Charging: Ee
- Closed WC: yes
- Speed: 140 km/h
- Seats: 71
- Hand brake: 20 t
- Brake type: KE-GPR
- G: 42
- P: 48
- R: 67
- RR: 70
- Weight: 41 t
- Total weight: 47 t
- Pivot dist.: 19 m
- Length: 26,4 m

Type: Byz

- Quantity: 16 pcs.
- Railway track no.: 51 43 21-30...
- YOM: 1978-1982
- Overhaul: 1996
- Heating: 1500/1000 V
- Charging: Ee
- Closed WC: yes
- Speed: 140 km/h
- Seats: 84
- Hand brake: 20 t
- Brake type: KE-GPR
- G: 42
- P: 48
- R: 67
- RR: 70
- Weight: 41 t
- Total weight: 47 t
- Pivot dist.: 19 m
- Length: 26,4 m

Wagon List (Halberstädter EUROREGIO multi-purpose baggage cars)

Type: BDyz

- Quantity: 3 pcs.
- Railway track no.: 51 43 84-33...
- YOM: 1978-1982
- Overhaul: 1996
- Heating: 1500/1000 V
- Charging: Ee
- Closed WC: yes
- Speed: 140 km/h
- Seats: 69
- Hand brake: 20 t
- Brake type: KE-GPR
- G: 42
- P: 48
- R: 67
- RR: 70
- Weight: 41 t
- Total weight: 47 t
- Pivot dist.: 19 m
- Length: 26,4 m
- Other: wheelchair / bicycle carrier

Type: Bbd

- Quantity: 1 pc.
- Railway track no.: 51 43 84-36 002-0
- YOM: 1978-1982
- Overhaul: 1996
- Heating: 1500/1000 V
- Charging: Ee
- Closed WC: yes
- Speed: 140 km/h
- Seats: 23
- Hand brake: 20 t
- Brake type: KE-GPR
- G: 35
- P: 37
- R: 53
- RR: 56
- Weight: 32 t
- Total weight: 37 t
- Pivot dist.: 17,6 m
- Length: 22,2 m
- Other: special transport for disabled people

Wagon List (Schlieren 29-03 wagons/ 29-05 wagons)

Type: Bpz

- Quantity: 11 pcs.
- Railway track no.: 50 43 29-03...
- YOM: 1977
- Overhaul: ~ 1992-1995
- Heating: 1500/1000 V
- Charging: e/Ee
- Closed WC: no
- Speed: 120 km/h
- Seats: 72
- Hand brake: 12 t
- Brake type: O-PR
- P: 30
- R: 40
- RR: 43
- Weight: 33 t
- Total weight: 38 t
- Pivot dist.: 17,6 m
- Length: 23,7 m

Type: Bpz

- Quantity: 6 pcs.
- Railway track no.: 50 55 29-05...
- YOM: 1977-1980
- Overhaul: ~ 1992-1995
- Heating: 1500 V
- Charging: ee
- Closed WC: no
- Speed: 120 km/h
- Seats: 72
- Hand brake: 12 t
- Brake type: O-PR
- P: 30
- R: 40
- RR: 43
- Weight: 33 t
- Total weight: 38 t
- Pivot dist.: 17,6 m
- Length: 23,7 m

Wagon List (Schlieren 29-03 multi-purpose baggage car/ Schlieren 84-05 multi-purpose bicycle cars)

Type: BDpz

- Quantity: 1 pc.
- Railway track no.: 50 43 82-03 001-4
- YOM: 1978
- Overhaul: ~ 1992-1995
- Heating: 1500/1000 V
- Charging: Ee
- Closed WC: no
- Speed: 120 km/h
- Seats: 56
- Hand brake: 12 t
- Brake type: O-PR
- P: 30
- R: 40
- RR: 43
- Weight: 33 t
- Total weight: 38 t
- Pivot dist.: 17,6 m
- Length: 23,7 m
- Other: bicycle carrier

Type: BDpz

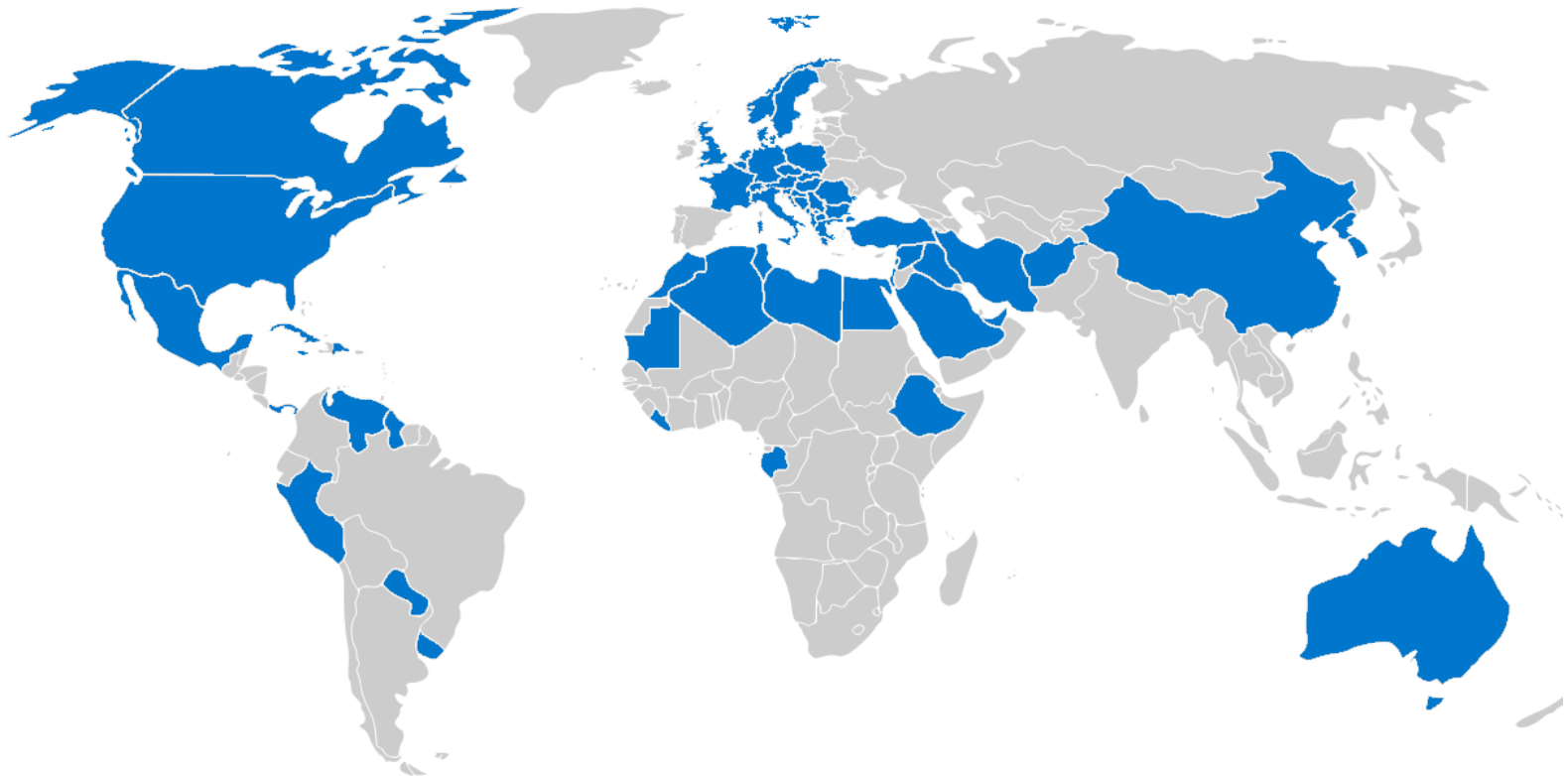
- Quantity: 8 pcs.
- Railway track no.: 50 55 84-05...
- YOM: 1977-1980
- Overhaul: ~ 1992-1995
- Heating: 1500/1000 V
- Charging: Ee
- Closed WC: no
- Speed: 120 km/h
- Seats: 30
- Hand brake: 12 t
- Brake type: O-PR
- P: 30
- R: 40
- RR: 43
- Weight: 32 t
- Total weight: 37 t
- Pivot dist.: 17,6 m
- Length: 23,7 m
- Other: 40 bicycles or folding seats


Wagon List (MAV Dunakeszi 82-03 wagon)

Type: Bh

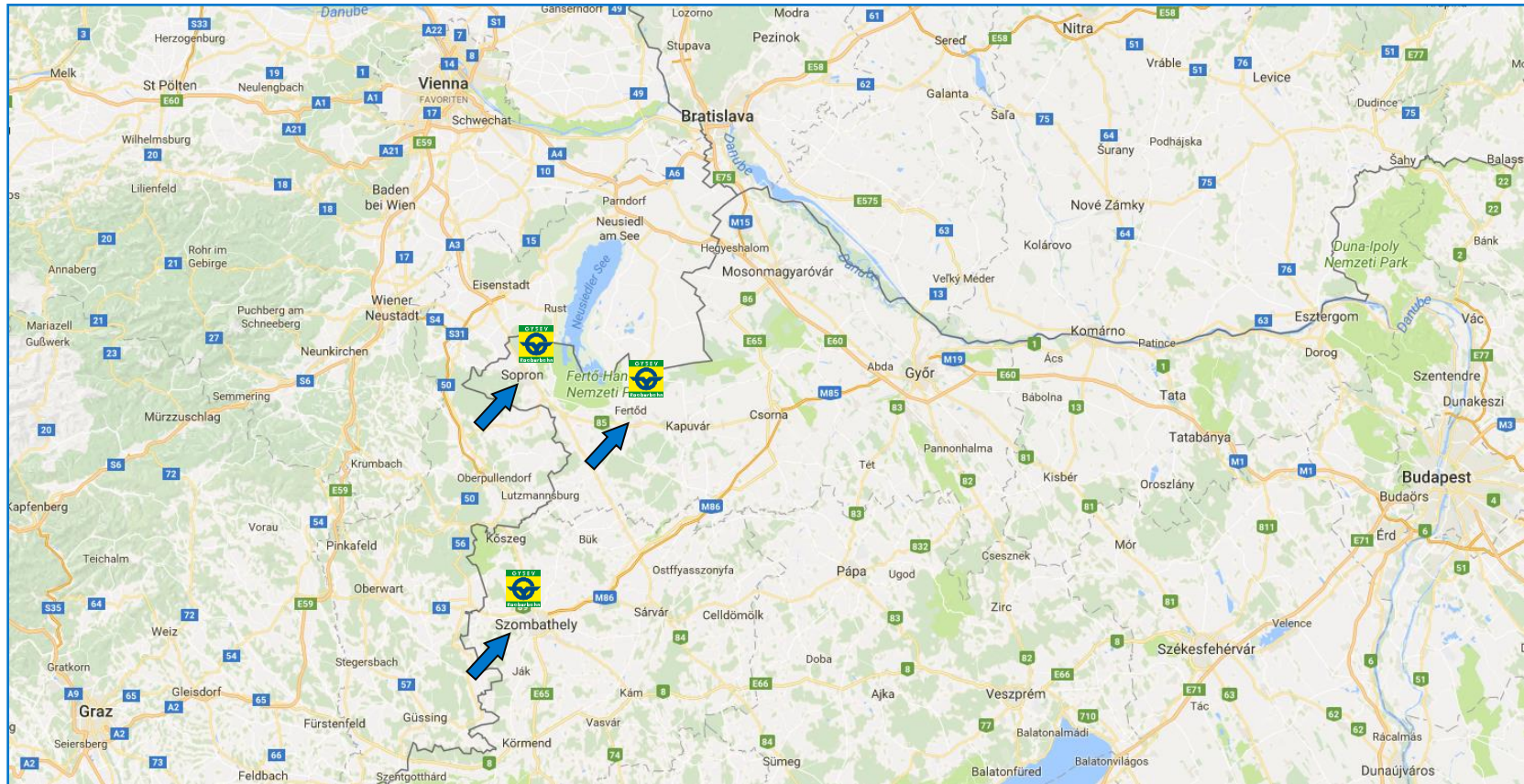
- Quantity: 1 pc.
- Railway track no.: 50 43 20-27 341-1
- YOM: 1978
- Overhaul: ~ 2009-2011
- Heating: 1500/1000 V
- Charging: Ee
- Closed WC: no
- Speed: 120 km/h
- Seats: 80
- Hand brake: 32 t
- Brake type: KE-GP
- G: 32
- P: 39
- Weight: 35 t
- Total weight: 41 t
- Pivot dist.: 16,5 m
- Length: 23,7 m

Countries



 **Track gauge:**
Standard 1.435 mm (4 ft 8.5 in)

Located in Hungary

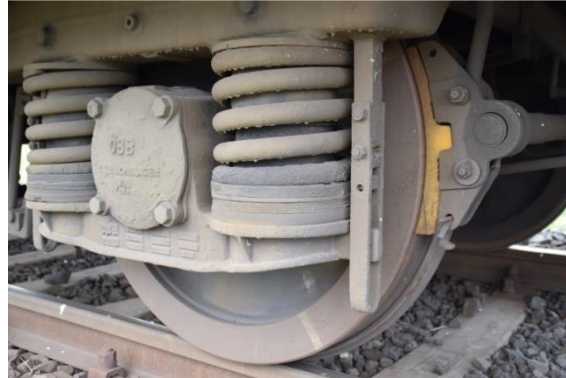


H-9400 Sopron, Állomás utca 2.

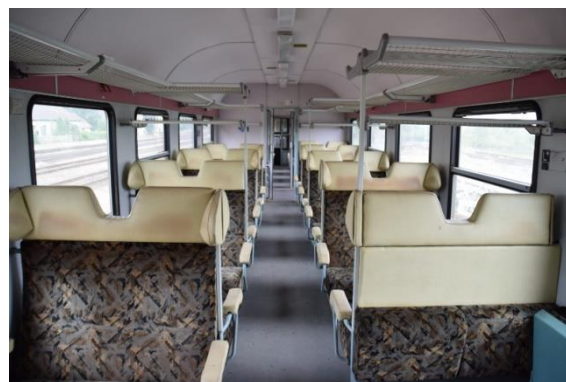
H-9444 Fertőszentmiklós, Gesztenye sor 11.

H-9700 Szombathely, Vasút utca 8.

Photos



Photos II



Photos III





NetBid GmbH Austria

**Bräuhausgasse 37
A-1050 Vienna, Austria**

Contact: Mr. Aron Magyar

Phone +43 1890 6670 402

Cell Phone +43 676 483 8091 or +36 30 2748 744

magyar@netbid.com

www.netbid.com